



**DUODEX ENGINEERING & TRADING SDN. BHD.** (332685-X)

● Fire protection specialist contractor & engineer ● Fire roller shutter & industrial doors specialist ● Fire rated partition & interior plaster supplier



## Transparent Shutter

**T**ransparent shutters are designed to provide security and transparency suitable for advertising products while the shops are closed. Duodex transparent shutter comes in motorised version or the manual version. The curtain (slats) are constructed from 3mm thick polycarbonate slats interlocking to form an elegant yet secure shutter. The transparent polycarbonate curtain ensures maximum view of products on display in the shop including view and identifying any intruder or unauthorised person in the shop even when closed. It is very convenient for security guards to clearly differentiate the owner or the intruder. In between these slats are aluminium rods which gives the shutter strength in security. The bottom bar at bottom is made up of aluminium preventing rust.





## Transparent Shutter

Transparent Shutter technology is the latest in roller shutter design. This shutter is manufactured from interlocking polycarbonate slats and aluminium tubing, while protection is secure, window display can be done after shopping hours

The numerous application includes main entrances to buildings, jewellery shop windows, money changer shutter and guarding loading zones. Architects, buildings management and interior designers who are looking at ways to protect building with a grand finishing touch look to the transparent shutter which has all the answers.

### Duodex Specification

#### ***Curtain***

Transparent shutter curtain is constructed from interlocking high impact polycarbonate moulded shutter slat combined with aluminium round bar. The slats are 1 feet in length and held in place on both ends by rubber tubings. The T bar is constructed by 2 aluminium angle bars screwed together with stainless steel bolt and nuts.

#### ***Side Guides***

The vertical guides are metal based painted in undercoat to give strength on motorized shutters. As for manual shutters aluminium side guides are the required option.

#### ***Endplates***

These endplate sizes are generally bigger in size than normal shutters as a result of the bigger coiling circle.

#### ***Finish***

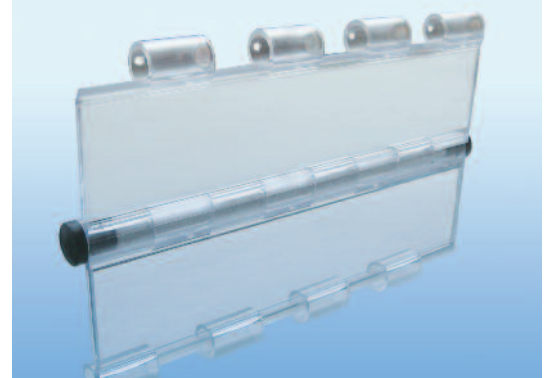
Generally the angle bars at the bottom and guides can be power coated or sprayed to the required colour.

#### ***Manual operation***

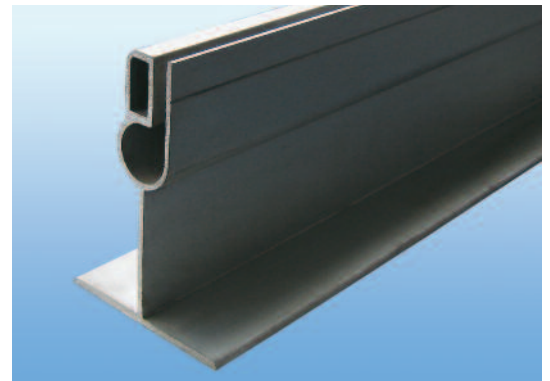
In this scenario transparent shutter width is fixed to a maximum 3.2m in length. The recommended maximum height is 2.4 meters. Anything longer than this, it is recommended that shutter to be split to 2 or more panels using a centre mullion which is aluminium based.

#### ***Motorised Operation***

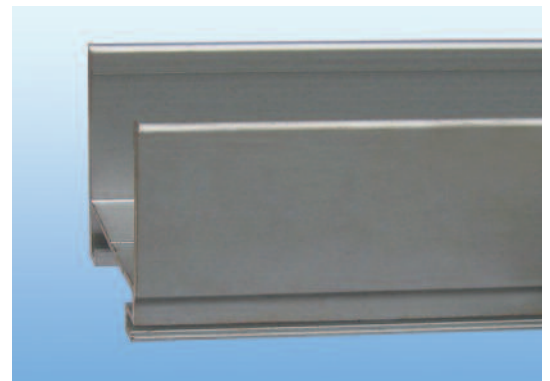
Most shops use motors as it is most convenient as transparent shutters are usually used at entrance. The length can reach to 8.5 meters in length. At cinemas, height can be as much as 5 meters in height.



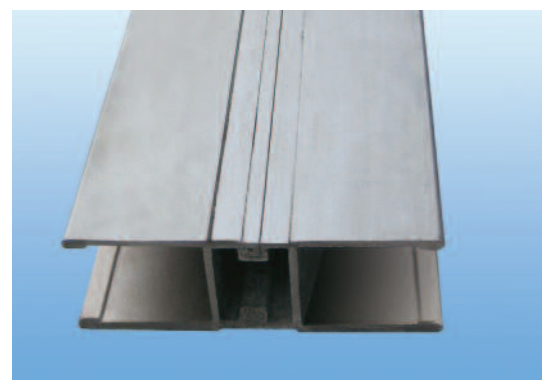
Transparent shutter slat



Transparent shutter T bar



Transparent shutter side guide

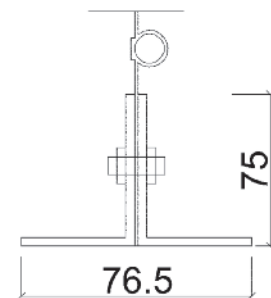
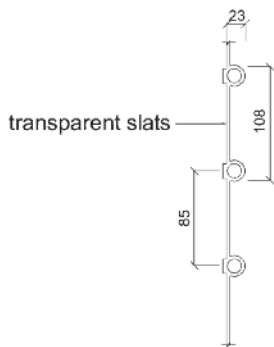
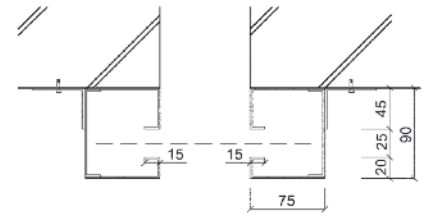
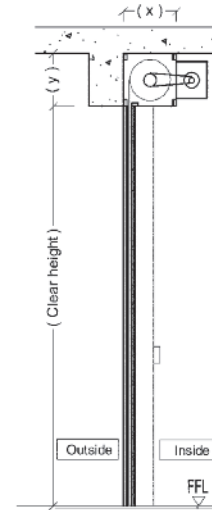
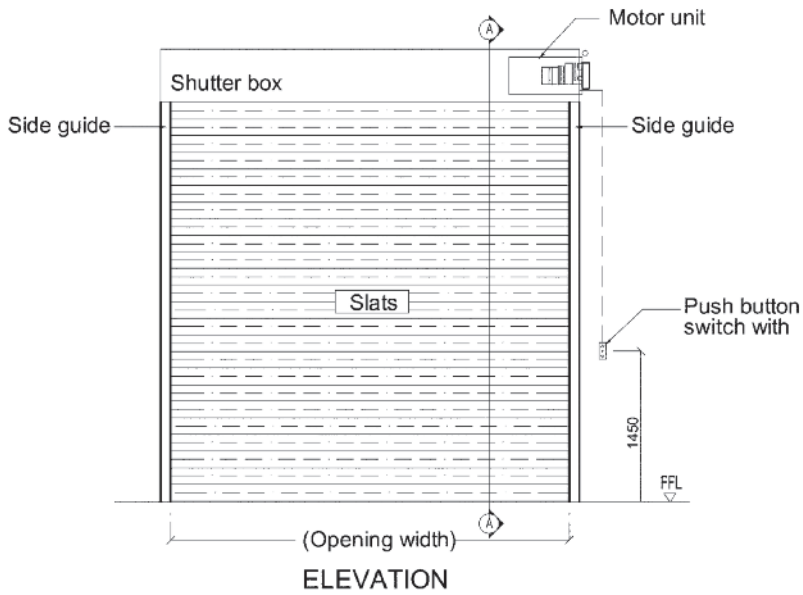


Transparent shutter mullion



# Transparent Shutter

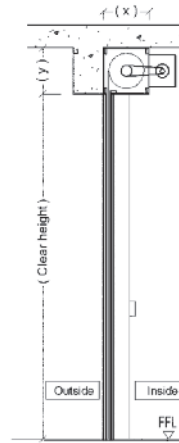
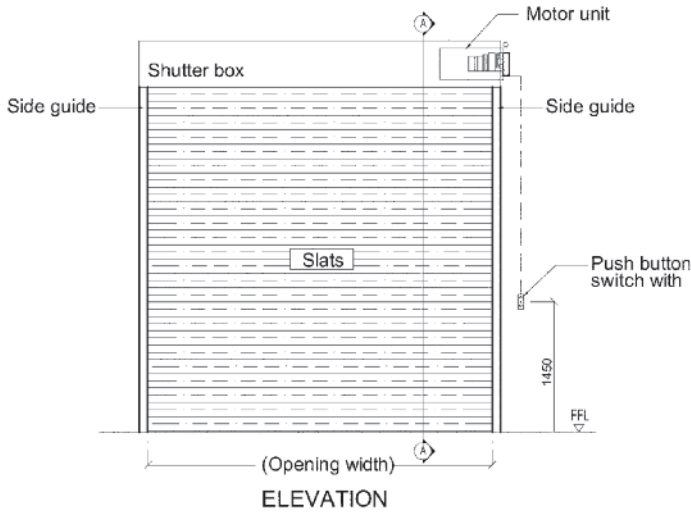
Clear Width	Clear Height	Box Size	
		A	B
4000mm	3000mm	450 x 450	
6000mm	4000mm	450 x 450	
8000mm	5000mm	500 x 500	



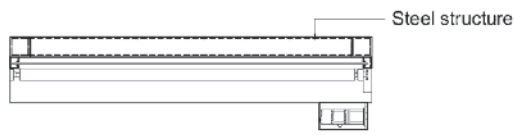


**Special Custom Design Transparent Shutters**

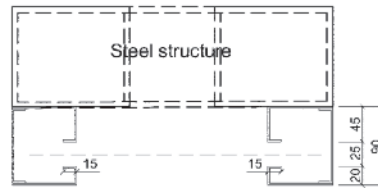
Transparent Shutter with self supporting hollow section structure



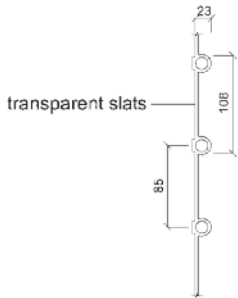
SECTION A - A



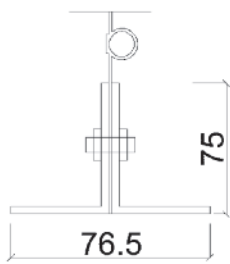
ROLLER SHUTTER PLAN



SIDE GUIDE

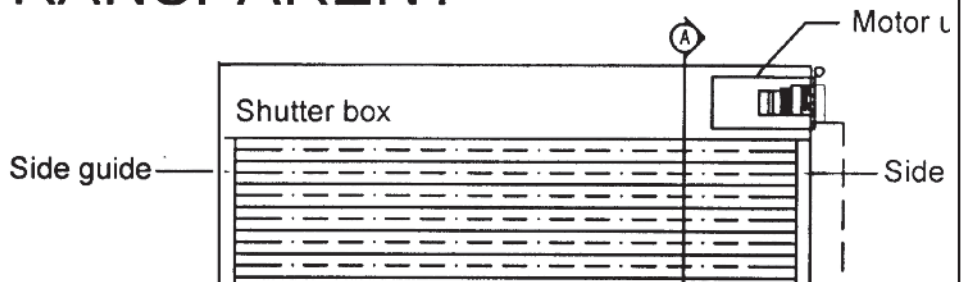


SECTIONAL TRANSPARENT SLAT



BOTTOM BAR

**TRANSPARENT**



**DUODEX ENGINEERING & TRADING SDN. BHD. (332685-X)**

(Formerly known as FIVE QUAYS ENGINEERING & TRADING SDN. BHD.)

No1, Jalan 6/4, Taman Sri Serdang, 433300 Serdang Selangor, Selangor Darul Ehsan, Malaysia.

Tel: (603) 8948 3808, 8943 6179, 8943 8022, 8943 6755 Fax: (603) 8943 6752, 8948 3078

E-mail: sales@duodex.com Website: www.duodex.com.my