



**DUODEX ENGINEERING & TRADING SDN. BHD.** (332685-X)

● Fire protection specialist contractor & engineer ● Fire roller shutter & industrial doors specialist ● Fire rated partition & interior plaster supplier

## Stainless Steel Shutter

**M**aximum security is provided with the introduction of the Duodex stainless steel shutters. These shutters are constructed from minimum 0.7mm-1.0mm thick slats and provide the utmost in security among all the range of shutters from us. All stainless steel shutters have an upper edge for best strengths, elegance and security and are supplied fully motorised. These shutter are not widely used because of its price. However we believe this type of shutter has the potential to be a market leader because of its strength and elegant outlook.





## Stainless Steel Shutter

These shutter slats are constructed from the grade 304. There are other grades available. The higher the grade the clearer the finishing it will have stainless steel shutter cannot have ventilated holes like normal shutters. In order to have specialised ventilated holes, special moulds must be provided.

Duodex has the expertise and had a project installing shutters which is used at the swimming pool area. All stainless steel shutters must be motor driven as it is heavy.

Stainless Steel guides can also be used for other types of shutters where there are existing side guides, stainless steel cladding of minimum 0.5mm can be provided to give a premium outlook.

### Duodex Specification

#### ***Curtain***

This curtain is constructed from grade 304 slats that uses a 75mm in diameter slats or a 100mm diameter slat in height. Thickness is 0.7mm to 100mm. Both rail is slat with 2 angles bolted with stainless steel bolts and nuts.

#### ***Side Guides***

Bent to suit design of 75mm x 90mm or 150mm x 90mm design come in thickness of 1.2mm.

#### ***Roller***

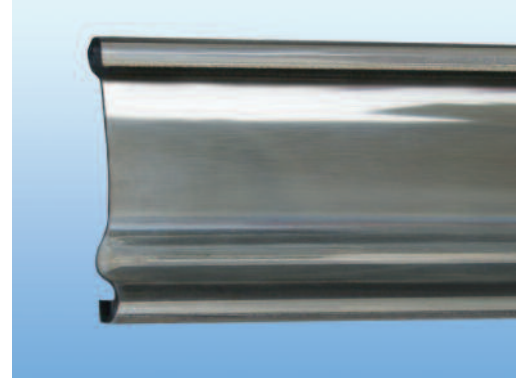
The shutter roller is made of minimum "AA" Pine. Both ends are supported by bearing welded to end plates.

#### ***Endplates***

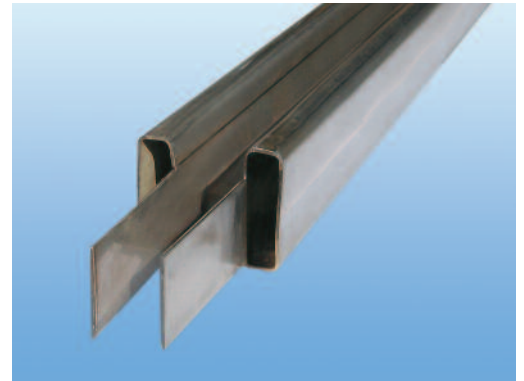
These shutters are fabricated with using mild steel plates. The sizes are the same as heavy duty shutter end plates.

#### ***Motorised Operation***

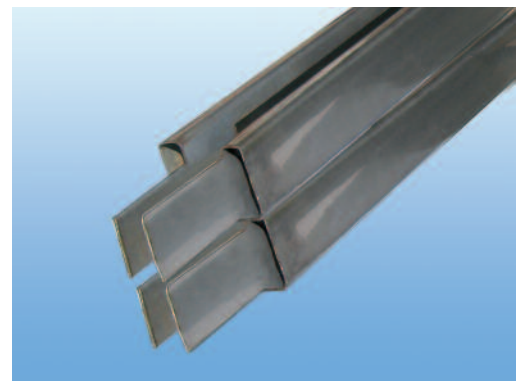
Here stainless steel shutters are mainly motorized as it is much heavier than other shutters. The usage of stainless steel in speciality areas such as counters and swimming pool areas makes the place security secure. The usage of back up battery and remote control are most common in this area. Remote control for shutters are also available.



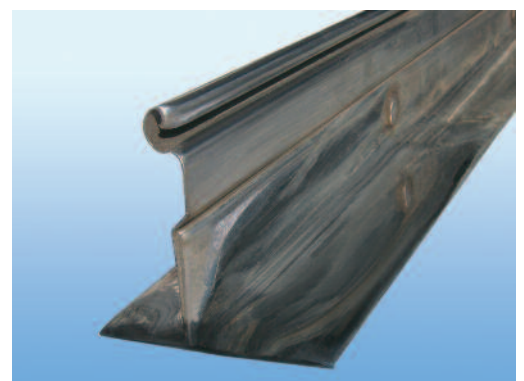
Stainless Steel Slat



Stainless Steel side guide



Center mullion



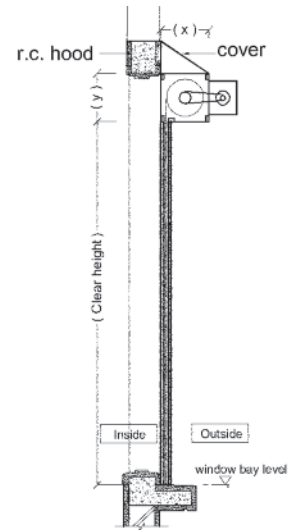
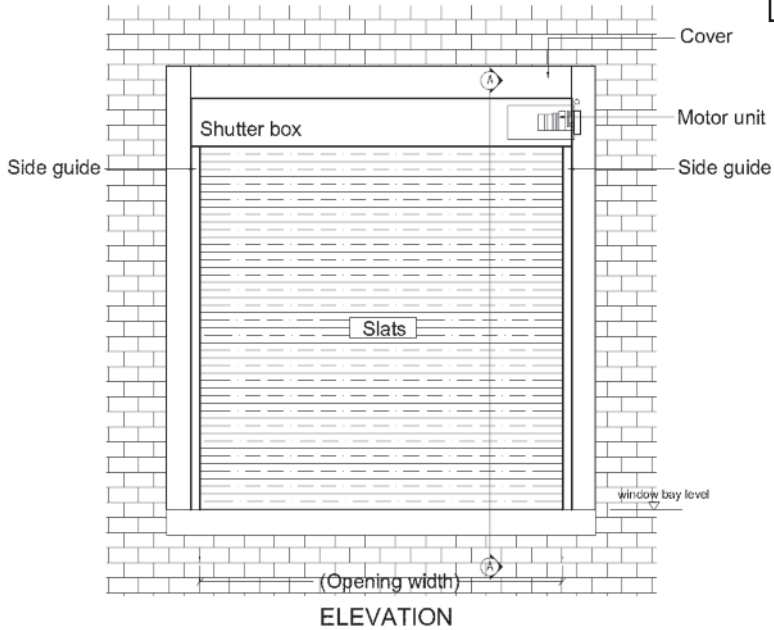
Stainless Steel T Bar



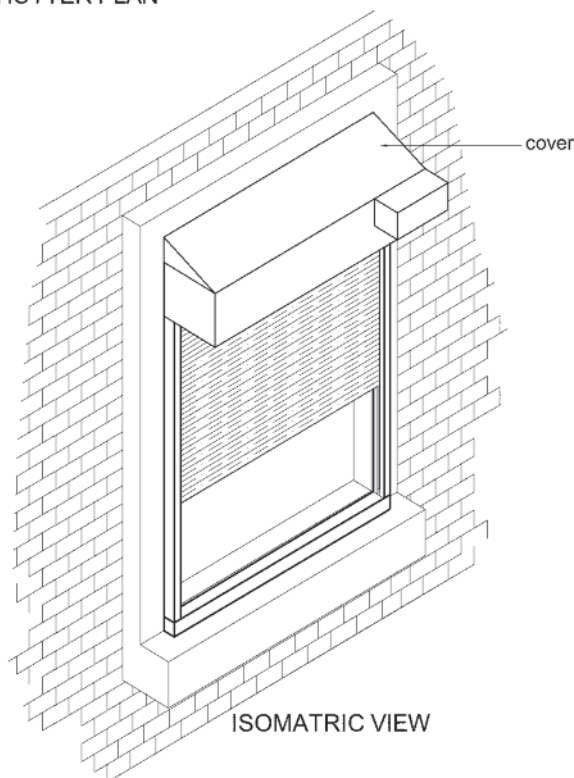
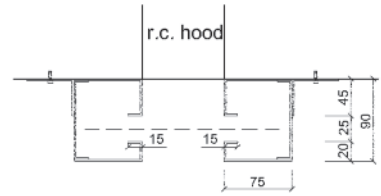
# Stainless Steel Shutter

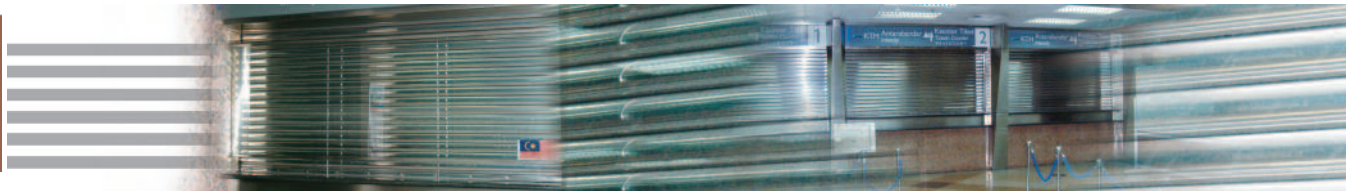
(window design)

Clear Width	Clear Height	Box Size	
		A	B
4000mm	3000mm	380 x 400	
6000mm	4000mm	380 x 400	
8000mm	5000mm	400 x 450	
10000mm	6000mm	550 x 600	



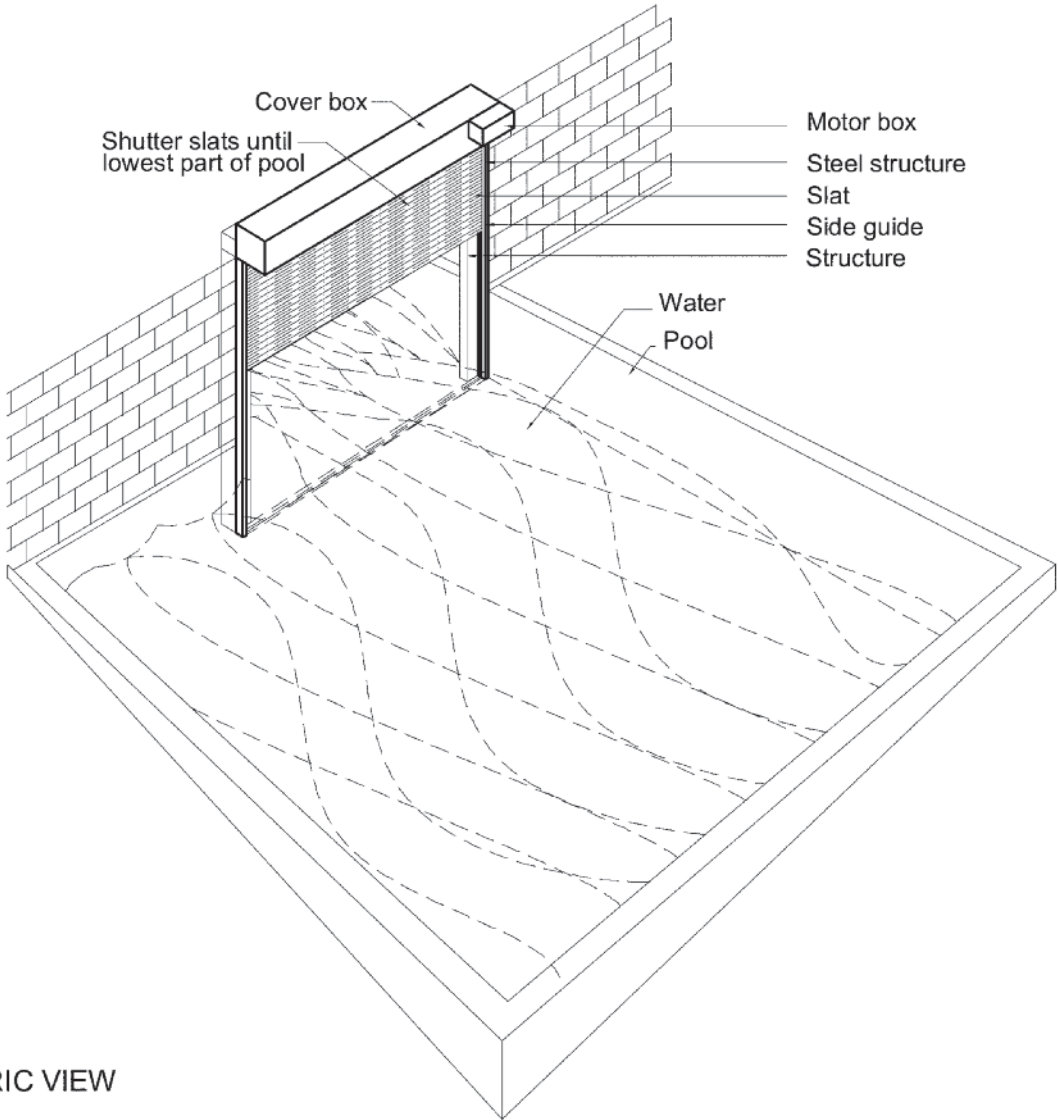
SCALE 1 : 25 (A3)





**Special Custom Design Stainless Steel Shutters**

**Stainless steel shutter at swimming pool**



ISOMETRIC VIEW